



OPEN HOUSE
PUBLIC
MEETING
#3

EXPLORE THE REMAINING ALTERNATIVES. HELP GUIDE THE DECISION.

US 67 and the Centennial Bridge serve as a vital connection between Rock Island and Davenport, supporting travel throughout the Quad Cities.

Led by the Illinois and Iowa Departments of Transportation, the US 67 (Centennial Bridge) Corridor study is evaluating potential long-term improvements to enhance safety, mobility, and reliability while considering community and environmental impacts.

What we heard...

PUBLIC MEETING #2

At the January 28, 2026 public meeting, a range of potential improvements (alternatives) were presented for public comment.

STRONG SUPPORT FOR BRIDGE REPLACEMENT

- Majority of comments supported full bridge replacement over rehabilitation
- Preference for a long-term solution vs. short-term fixes

ALTERNATIVE PREFERENCES

- Maintaining existing travel patterns (E2)
- Interest in improved regional connectivity (E7)
- Different priorities reflected across comments

KEY CONSIDERATIONS RAISED

- Property and community impacts
- Construction duration and detours
- Maintaining access during construction
- Impacts to downtown areas

BICYCLE & PEDESTRIAN ACCESS

- Continued strong support for bicycle and pedestrian facilities



How Are Alternatives Evaluated?

Each alternative is evaluated using consistent criteria, including:

Purpose and Need

- ✓ Service Life
- ✓ Bridge, Road, and Ped/Bike Deficiencies Corrected
- ✓ Downtown Connection

Environmental Impacts

- ✓ Property Impacts
- ✓ Historic and Recreational Resources Impacts

Construction Impacts

- ✓ Bridge Closures and/or Lane Closures During Construction
- ✓ Construction Duration

Economic Reasonableness

ALTERNATIVES REVIEW

Since the previous public meeting, the project team has completed additional analysis and reviewed community feedback to narrow the improvement options (alternatives) to those that **best address the corridor's long-term transportation needs while balancing safety, mobility, connectivity, constructability, and community impacts.**

Based on this work, three alternatives are recommended to be dismissed.



BRIDGE REHABILITATION

Does not fully meet purpose and need.

Does not provide long-term solution.



BUILD NEW TWIN STRUCTURE/ REHABILITATE EXISTING BRIDGE

Does not fully meet purpose and need.

Does not provide long-term solution.



BRIDGE RECONSTRUCTION

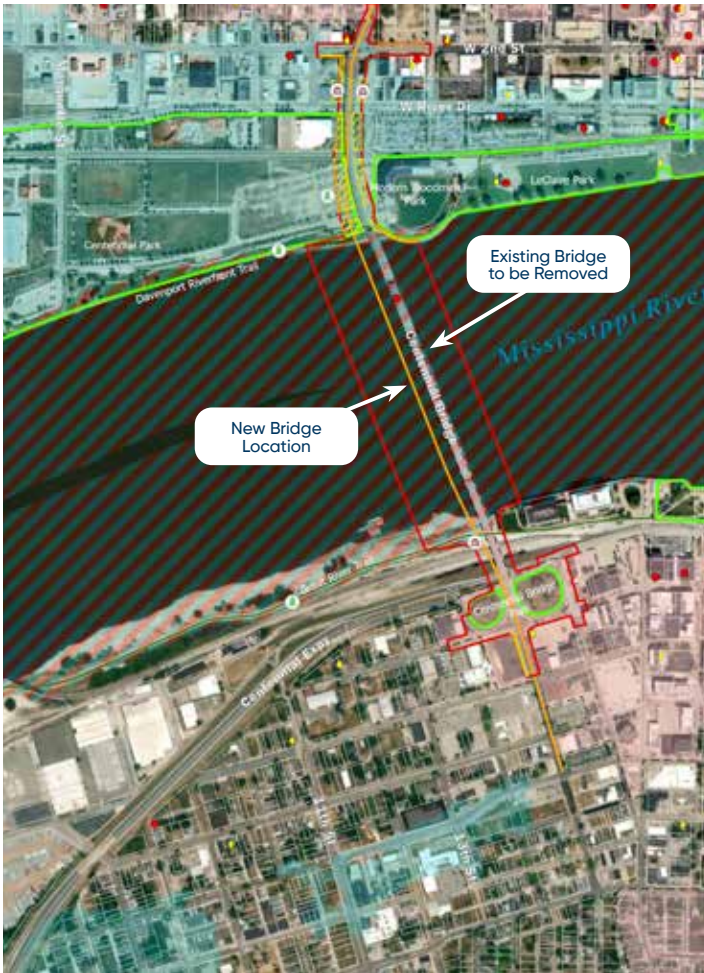
Requires bridge to be closed for extended periods. Difficult to maintain traffic during construction.

Not cost-effective compared to other alternatives that meet purpose and need.

DISMISSED



Two remaining bridge replacement alternatives best meet the project goals.



DESCRIPTION – ALTERNATIVE E2

Meets Purpose and Need

Replaces bridge just west of the existing structure

Improved river crossing connection, while maintaining current travel patterns and connectivity between downtowns

Minimizes impacts in Rock Island and Davenport

Fewer property impacts than E7

Provides long-term reliability

Allows existing bridge to stay open during construction

DESCRIPTION – ALTERNATIVE E7

Meets Purpose and Need

Shifts bridge to connect 11th Street in Rock Island to Marquette Street in Davenport

Improved river crossing connection

Requires more change to surrounding areas

More impacts to nearby properties and communities than E2

Provides long-term reliability

Allows existing bridge to stay open during construction

No preferred alternative has been selected at this time.

The No Build Alternative will be retained throughout the study and used as a baseline for comparison



