

US 67 (Centennial Bridge) Corridor Project

Technical Advisory Group Meeting #1

June 12, 2025

Agenda

- Introductions
- Community and Public Involvement
- Technical Advisory Group Overview
- Project Overview
- Study Process
- Purpose and Need
- TAG Feedback – Group Exercise Goals & Concerns
- Alternatives Development Process
- Upcoming Activities
- Discussion/Questions

Introductions

- **IDOT**
 - Michael Kuehn, Studies and Plans Engineer
 - Deana Hermes, Studies and Plans Team Leader
 - Heath Jordan, Environmental Supervisor
- **Iowa DOT**
 - Phil Mescher, Transportation Planner/Project Manager
 - Hector Torres-Cacho, District Planner

Introductions

Consultant Team

Parsons

- Mark Peterson, Project Manager
- Tony Pakeltis, Environmental Lead
- Will Colletti, Structural
- Amy Eckland, Public Involvement
- Danielle Fishman, Public Involvement
- Samantha Schutte, Public Involvement

OSEH

- Usman Bhatti

Introductions

- **TAG Members**

- James Grafton, Rock Island County Administrator
- Matthew Miller, Rock Island County Engineer
- Mayor Ashley Harris, City of Rock Island
- Todd Thompson, Rock Island City Manager
- Mike Kane, Rock Island Engineer
- John Gripp, Rock Island Director of Parks and Recreation
- Chief Timothy McCloud, Rock Island Police Department
- Chief Bob Graff, Rock Island Fire Department
- Captain Justin Chisholm, Rock Island Sheriff's Office

Introductions

- **TAG Members**

- Mahesh Sharma, Scott County Administrator
- Elliott Pennock, Scott County Assistant Engineer
- Greg Schaapveld, Scott County Planning & Development Director
- Mayor Mike Matson, City of Davenport
- Doug Maxeiner, Davenport City Administrator
- Brian Schadt, Davenport Engineer
- Chad Dyson, Davenport Director of Parks and Recreation
- Lt. Jason Smith, Davenport Police Department
- Chief Mike Carlsten, Davenport Fire Department
- Sheriff Tim Lane, Scott County Sheriff's Office

Introductions

- **TAG Members**
 - Dr. Sharon Williams, Superintendent Rock Island-Milan School District
 - TJ Schneckloth, Superintendent Davenport Community Schools
 - Gena McCullough, Deputy Director Bi-State Regional Commission
 - Denise Bulat, Executive Director, Bi-State Regional Commission
 - Jackie Opfer, Assistant Professor Environmental-Engineering, Augustana College

Community and Public Involvement



Technical Advisory Group (TAG)

Purpose

- Provide specialized expertise and guidance
- Facilitate collaboration
- Provide local knowledge of constraints and opportunities
- Provide input to the Project Study Team (Not a decision-making party)

Who Makes the Final Decision?

- Federal Highway Administration (FHWA)
- Illinois Department of Transportation
- Iowa Department of Transportation
- With input from:
 - Cooperating Agencies
 - Section 106 Consulting Parties
 - Technical Advisory Group
 - Community Advisory Group
 - General Public

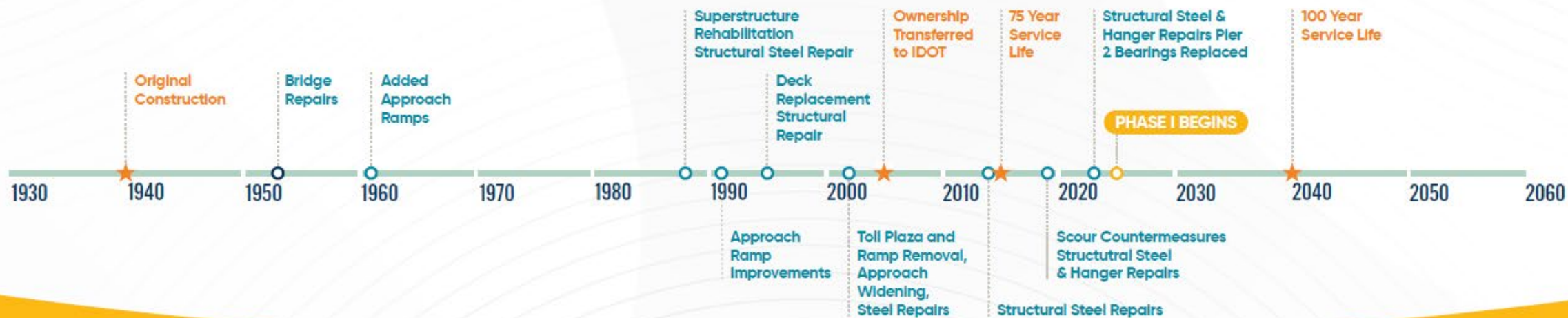
Project Overview

- The bridge is 85 years old
- The aging structure required frequent and costly repairs
- Study launched to develop a long-term plan for the US 67 corridor



Centennial Bridge

US 67 (Centennial Bridge) Corridor Project



Study Process

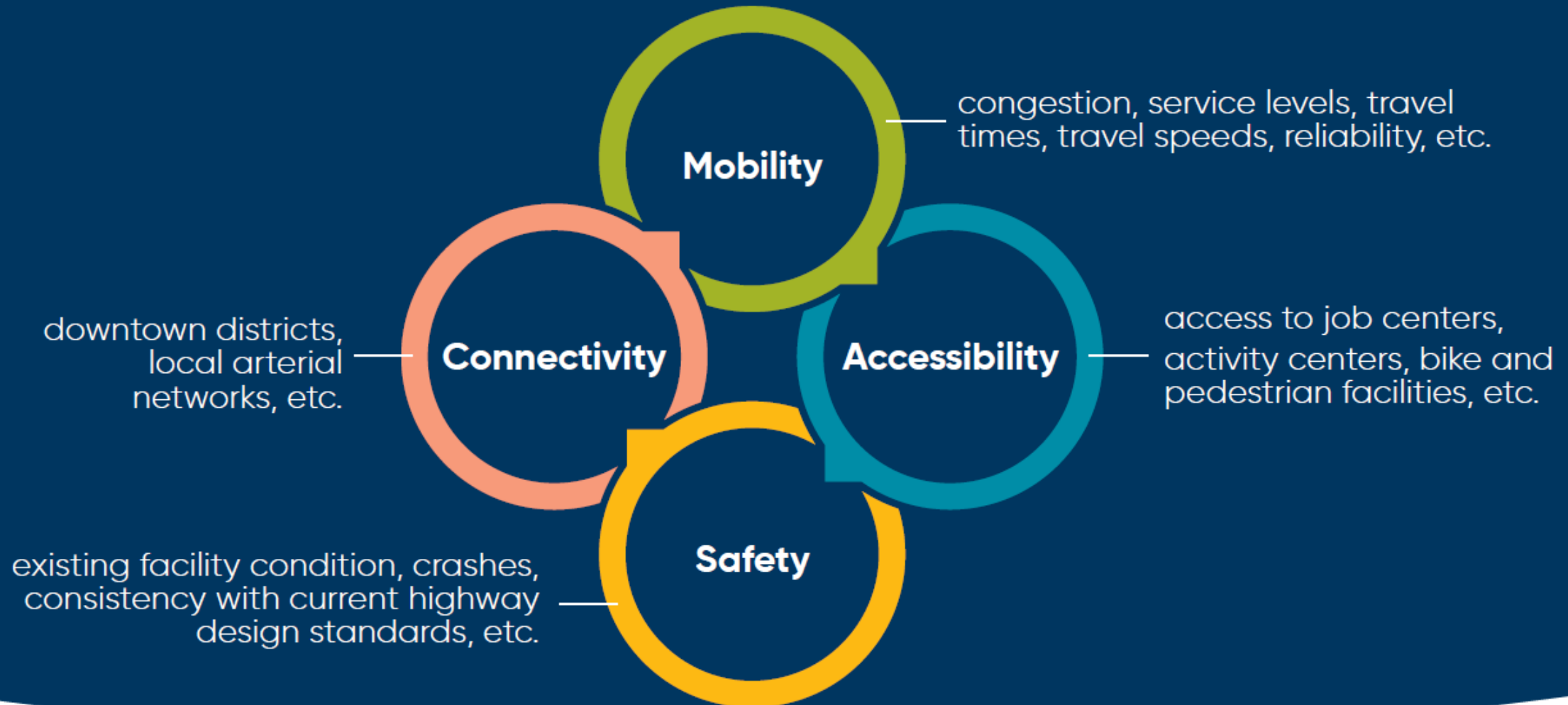
PROJECT DEVELOPMENT & IMPLEMENTATION PROCESS



National Environmental Policy Act (NEPA)



Purpose and Need Development/Criteria



Preliminary Project Purpose

- Sustain for the long term a bridge across the Mississippi River that meets motorized and non-motorized needs in the study area.
- Eliminate or reduce under-designed or non-redundant details that contribute to load posting or increased inspection and maintenance burden.
- Eliminate or reduce roadway geometric deficiencies where they are a contributing cause of safety issues.
- Improve active transportation connectivity across the Mississippi River.
- Accommodate local improvement plans for improved transit service.
- Reduce the likelihood of roadway flooding along U.S. 67 corridor.

Goals / Concerns

What are the most important objectives for the project?

What are your biggest concerns about the existing bridge?

Alternatives Development Process

ASSESS ENVIRONMENTAL FACTORS

neighborhoods, park/recreation areas, historic resources, water quality, wetlands, noise, and air quality



DEVELOP AND REFINE ALTERNATIVES

through evaluations of environmental factors and impacts, agency coordination, and public input



GOAL

avoid, minimize and mitigate environmental impacts



Study Limits



Study Corridor

R

New alignment, downstream

G

New alignment, in close downstream

B

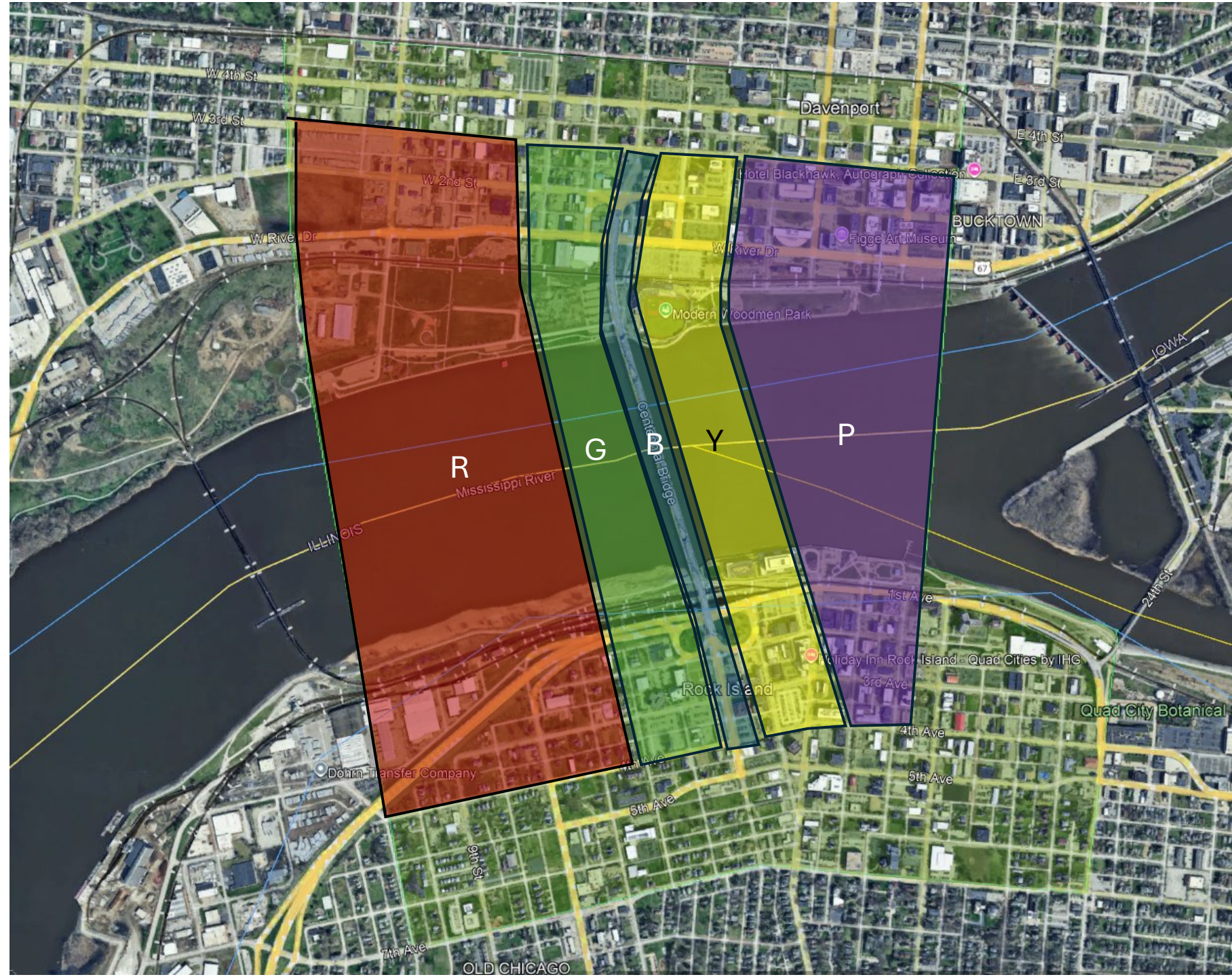
Existing alignment

Y

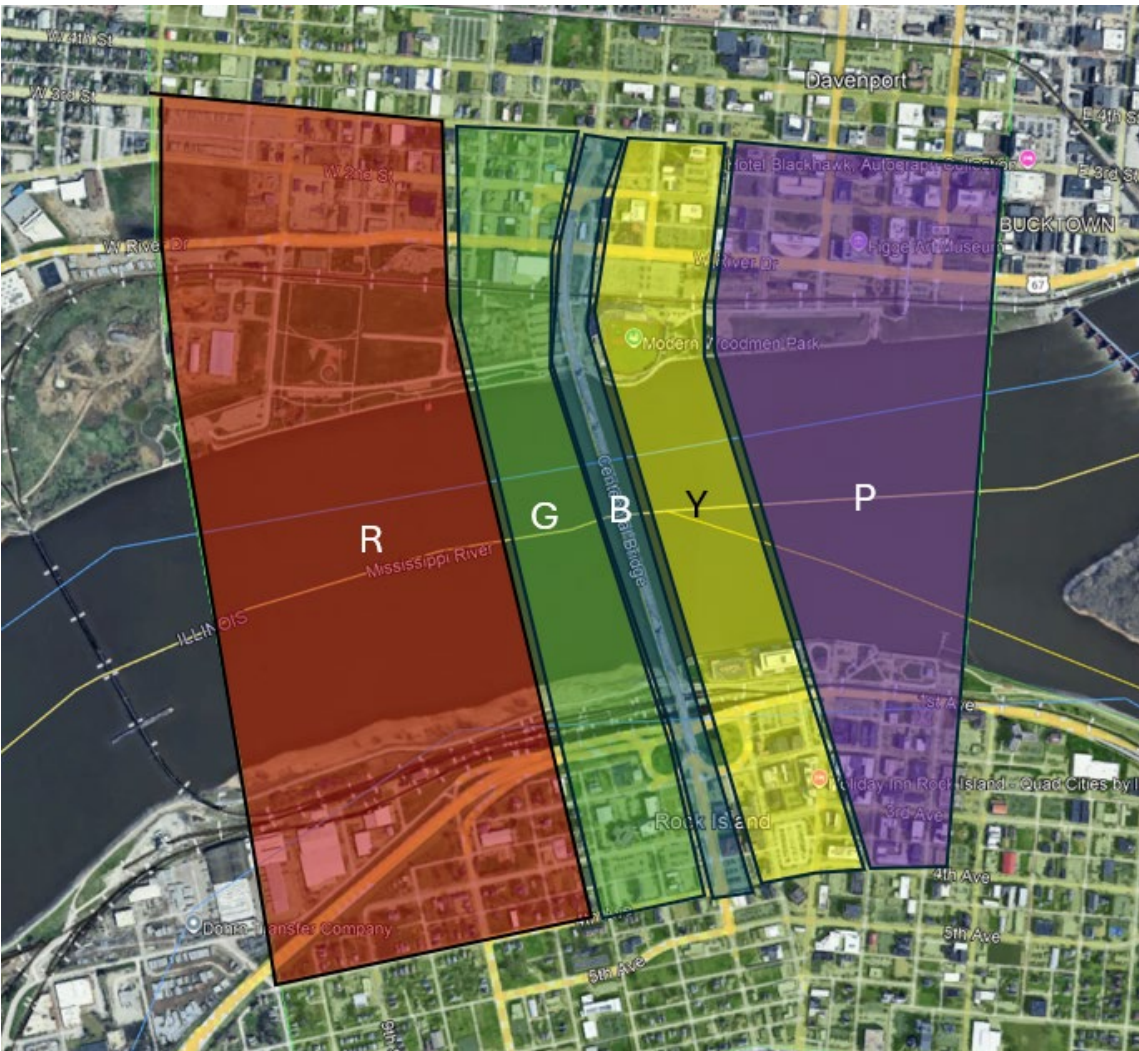
New alignment, in close upstream

P

New alignment, upstream



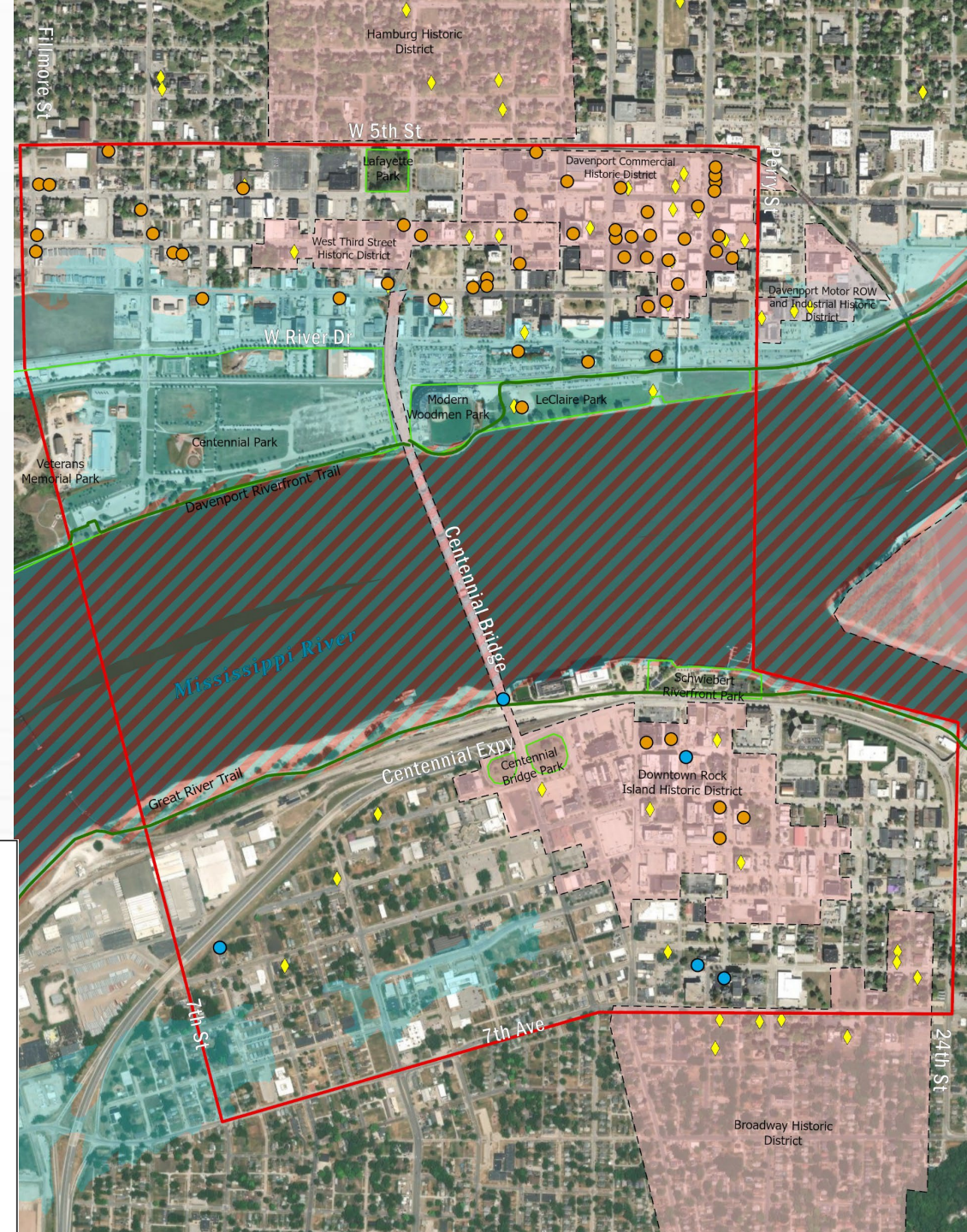
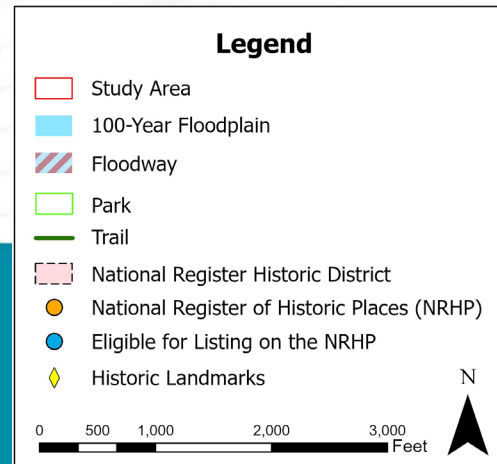
Study Corridor – Pros/Cons



Alignment	Pros	Cons
New alignment, upstream 		
New alignment, in close upstream 		
Existing alignment 		
New alignment, in close downstream 		
New alignment, downstream 		

Environmental Resources

- Floodplain/Floodway
- Parks/Trails
- Historic Resources
- Special Waste Sites
- Socioeconomics (includes displacements)
- Water Quality
- Wetlands
- Threatened and Endangered Species
- Noise and Air Quality



Section 106 and Section 4(f)

Section 106 of the National Historic Preservation Act

- Consider the effects of federally funded projects on historic properties.
- Identify historic properties, assess the effects and explore alternatives to avoid, minimize, or mitigate adverse effects.

Section 4(f) Properties

- Publicly-owned public parks, recreational areas of national, state, or local significance, wildlife or waterfowl refuges; or lands from a historic site of national, state, or local significance.
- Determine that there is no feasible and prudent alternative to avoid the Section 4(f) properties.
- Includes all possible planning to minimize harm to the Section 4(f) properties.



Upcoming Activities



Project Schedule

US 67 (Centennial Bridge) Corridor Project



- PUBLIC MEETING/HEARING
- TECHNICAL ADVISORY GROUP & COMMUNITY ADVISORY GROUP MEETINGS
- FINAL PROJECT REPORT
- PROJECT PROGRESS

Discussion/Questions

Thank you for attending!